



NYC'S FINEST
CURATED INTERIORS

TRIBECA
SOHO
MIDTOWN
FLATIRON DISTRICT
GREENWICH

A LOOK INSIDE
AN NYC LUXURY
INTERIOR DESIGNER'S LIFE



TABLE OF CONTENTS

A NOTE FROM THE DESIGNER

SOHO PENTHOUSE

COLUMBUS CIRCLE CHIC

FLATIRON GLAM

GREENWICH ESTATE

PINK IN TRIBECA

MIDTOWN MID-CENTURY

WESTHAMPTON ESTATE

SAFAVIEH SOHO SHOWROOM



The chaotic but immensely deep and beautiful world we live in today is shaping interior design standards by sophistication having to encompass a natural, Feng Shui aesthetic, so interiors act as an oasis from the madness of everyday life. Using this underlying ideal, the character and detail of a space is then brought into the space through the client's story. In any field, any work of art is a process to create, and interiors entail many processes. Having the ability to meet a client, understand what they want, and show them what they did not know they wanted, then tying all these decisions to a cohesive vision, that will result in a successful interior design project.

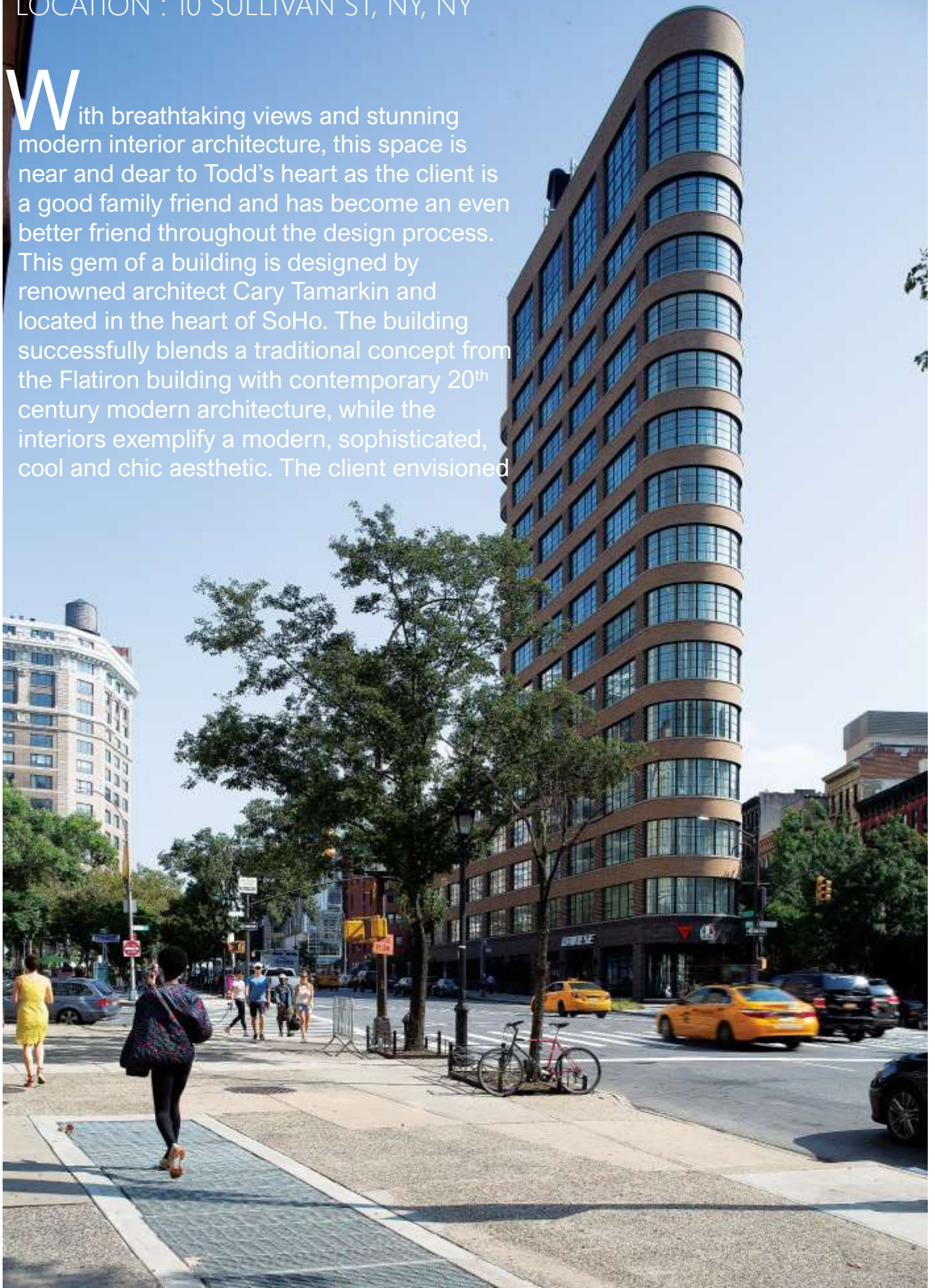
Interior design entails much more and is much deeper than most people would think, it's a very important job deciding how someone is going to feel in their home and live their lifestyle. So, it is so important to put love, attention and good energy into every detail and decision, as this reflects in the overall outcome. My clients inspire me every day and show me what life is all about, which I'm incredibly grateful for and strive to return the favor as I guide them through these processes, and because of this deeper understanding, we have incredibly successful works of art. Each project is a journey and tells the story of the crazy beautiful world we live in today. I hope to create dream - like spaces that give whoever enters them the spirit of light, love and happiness, and ultimately makes them feel alive.

Xoxo,
C. Todd

SOHO PENTHOUSE

LOCATION : 10 SULLIVAN ST, NY, NY

With breathtaking views and stunning modern interior architecture, this space is near and dear to Todd's heart as the client is a good family friend and has become an even better friend throughout the design process. This gem of a building is designed by renowned architect Cary Tamarkin and located in the heart of SoHo. The building successfully blends a traditional concept from the Flatiron building with contemporary 20th century modern architecture, while the interiors exemplify a modern, sophisticated, cool and chic aesthetic. The client envisioned





the most fun, sophisticated, and comfortable bachelor pad we could ever dream of with rich materials and bold pops of color. The juxtaposition between light and dark in the architecture, carried throughout the furniture, along with pops of color creates interesting yet soothing compositions. Greys and beiges with warm wood tones create a relaxing and Zen like palette while the brilliant pops of color gives the space it's beautiful and charming character.





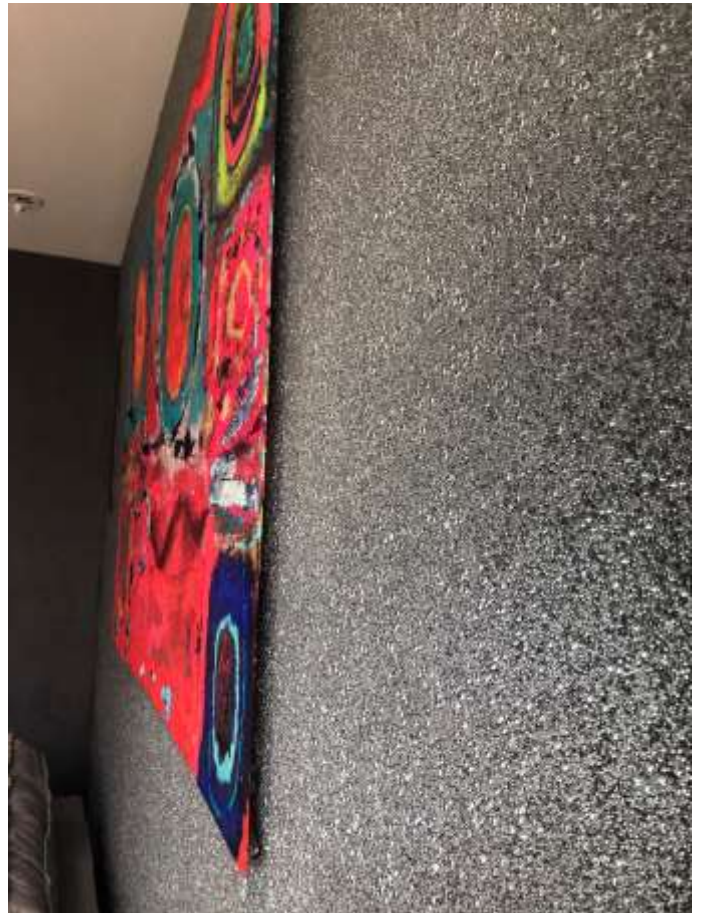
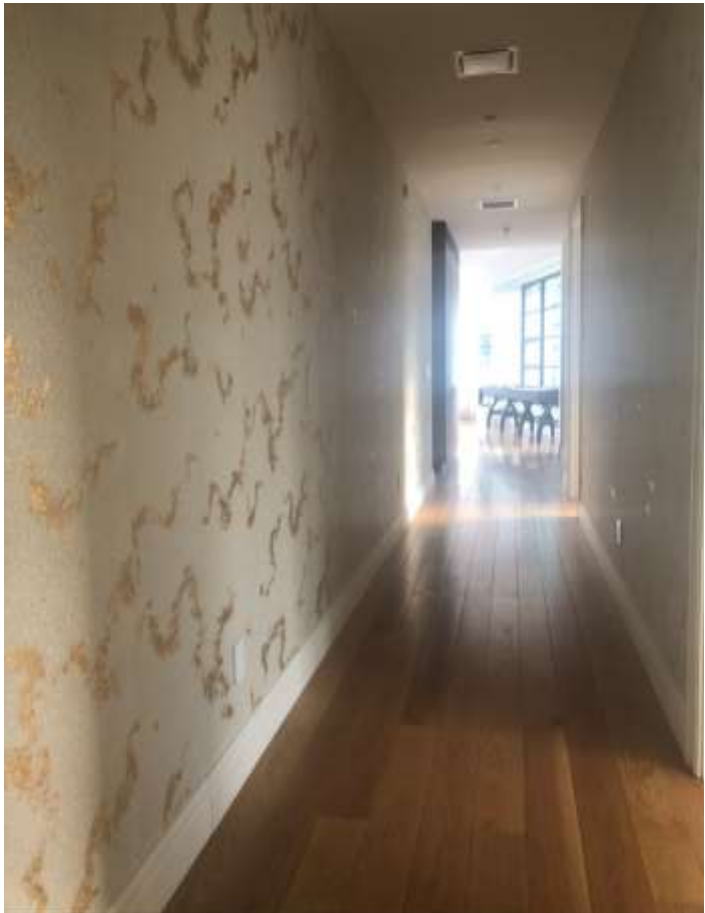






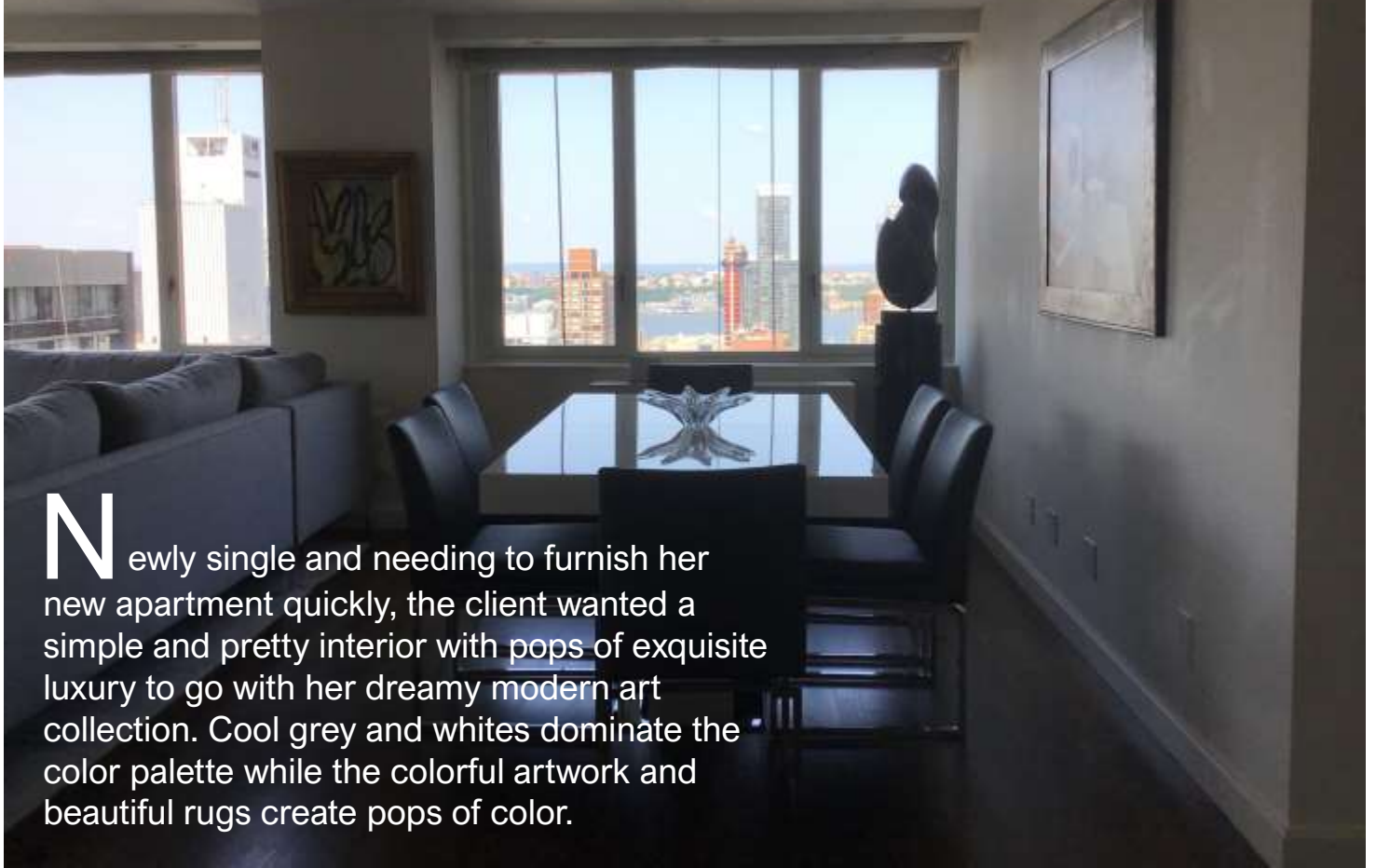


The client loves art, travel and culture, and has an incredible artwork collection from infamous artists which brings opulent elements of color and texture to the spaces. The spaces radiate modern luxury and are polished off with 24K gold and glass bead, Calcutta marble, metallic linen and suede walls.



COLUMBUS CIRCLE CHIC

LOCATION : 322 WEST 57TH ST., THE SHEFFIELD, NY, NY.



Newly single and needing to furnish her new apartment quickly, the client wanted a simple and pretty interior with pops of exquisite luxury to go with her dreamy modern art collection. Cool grey and whites dominate the color palette while the colorful artwork and beautiful rugs create pops of color.





While the furniture frames are very structured and compliment the modern architecture, there is still a soft femininity to the space through color, tones and materiality. With spectacular views of the city and Hudson yards, we designed the space to maximize the view and allow for a Feng Shui inspired flow of energy and space.



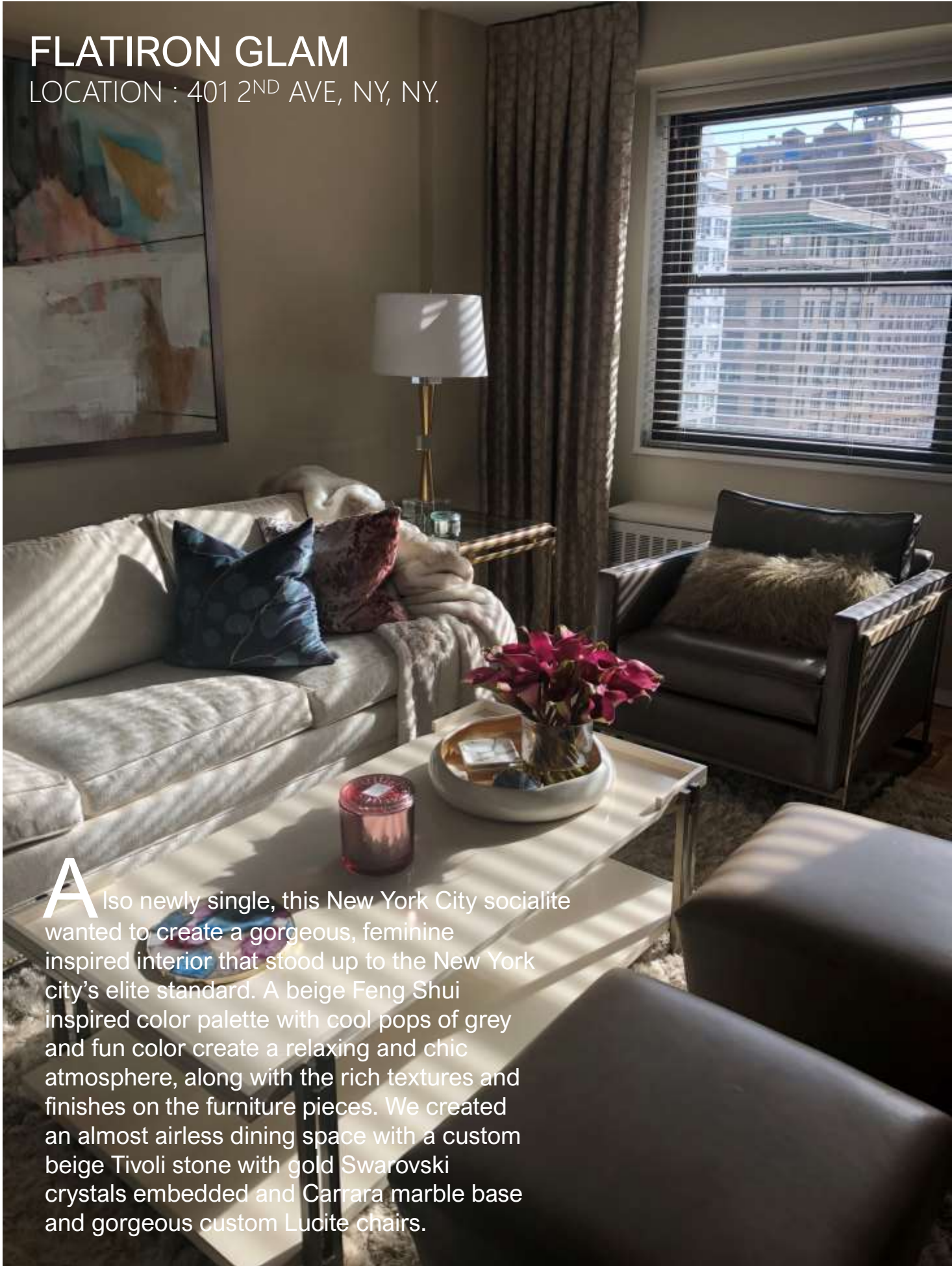






FLATIRON GLAM

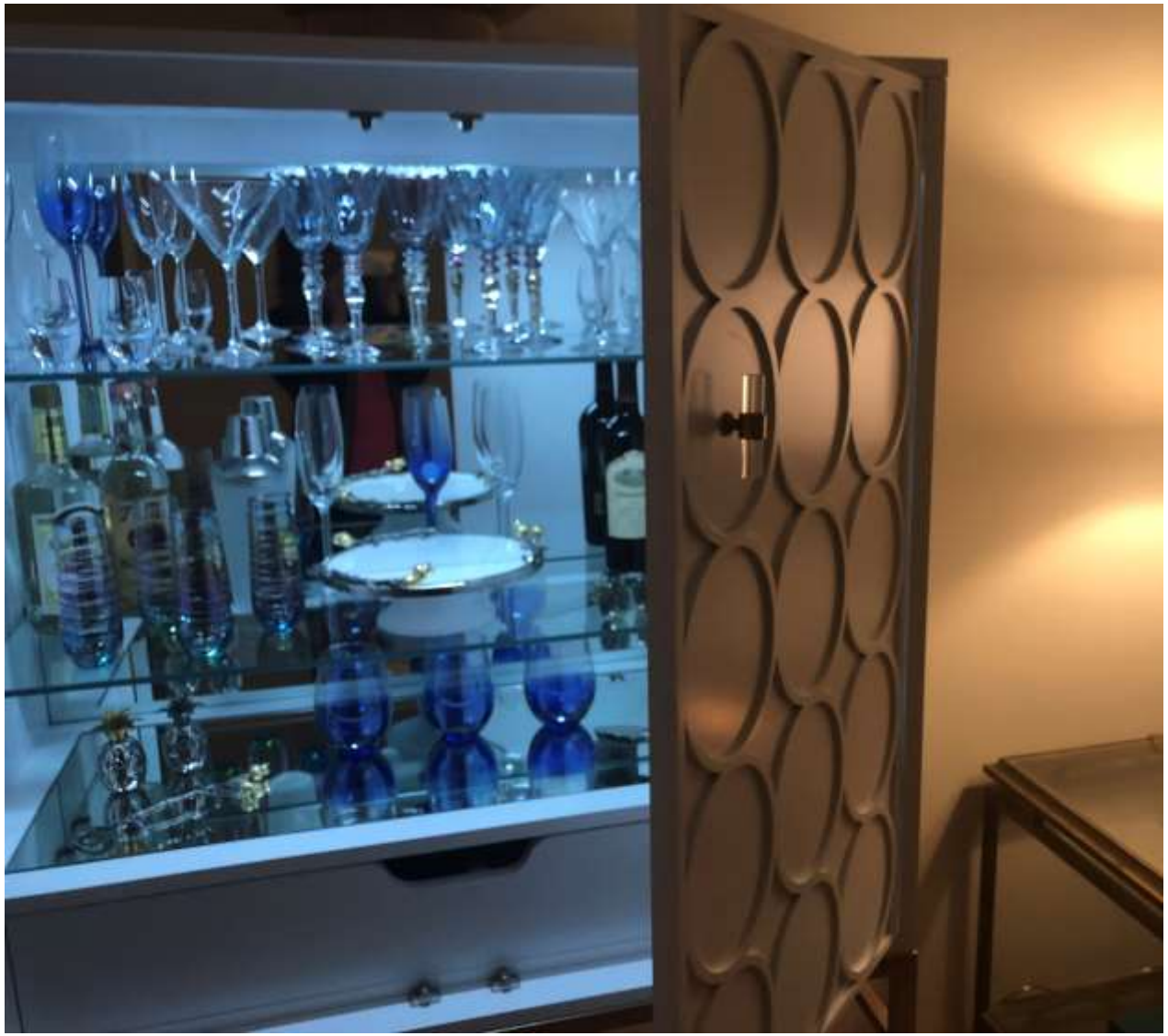
LOCATION : 401 2ND AVE, NY, NY.

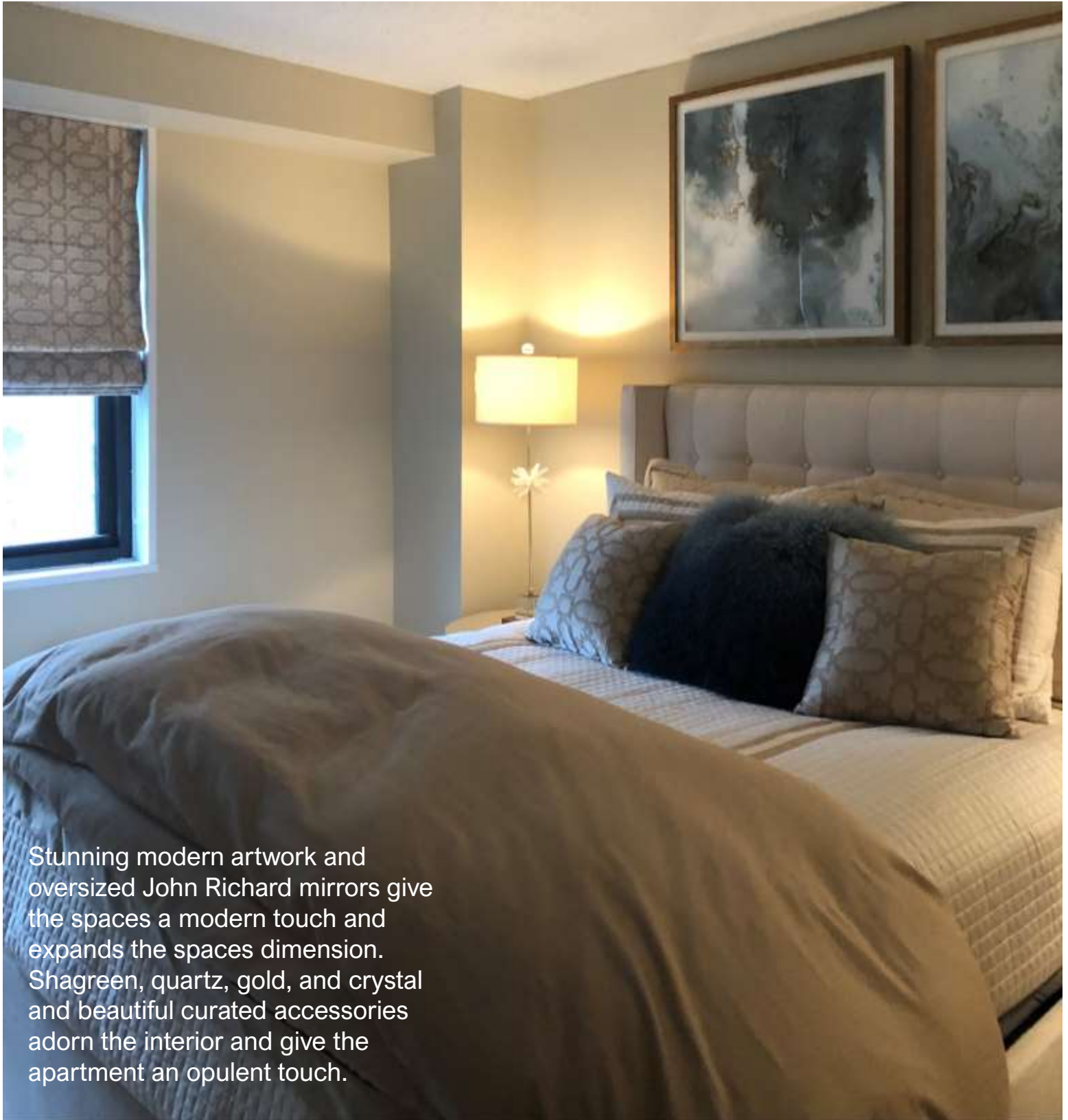


Also newly single, this New York City socialite wanted to create a gorgeous, feminine inspired interior that stood up to the New York city's elite standard. A beige Feng Shui inspired color palette with cool pops of grey and fun color create a relaxing and chic atmosphere, along with the rich textures and finishes on the furniture pieces. We created an almost airless dining space with a custom beige Tivoli stone with gold Swarovski crystals embedded and Carrara marble base and gorgeous custom Lucite chairs.

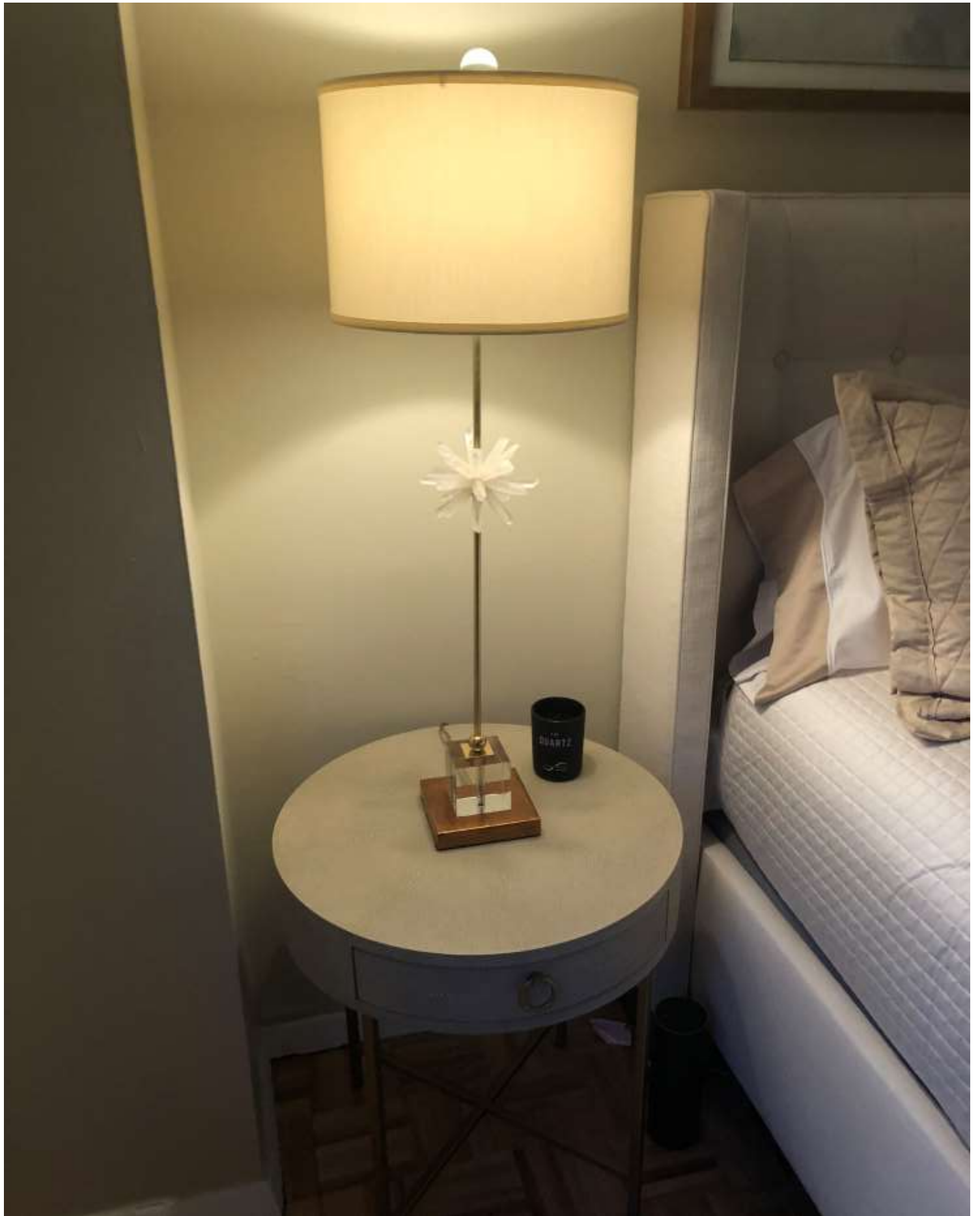


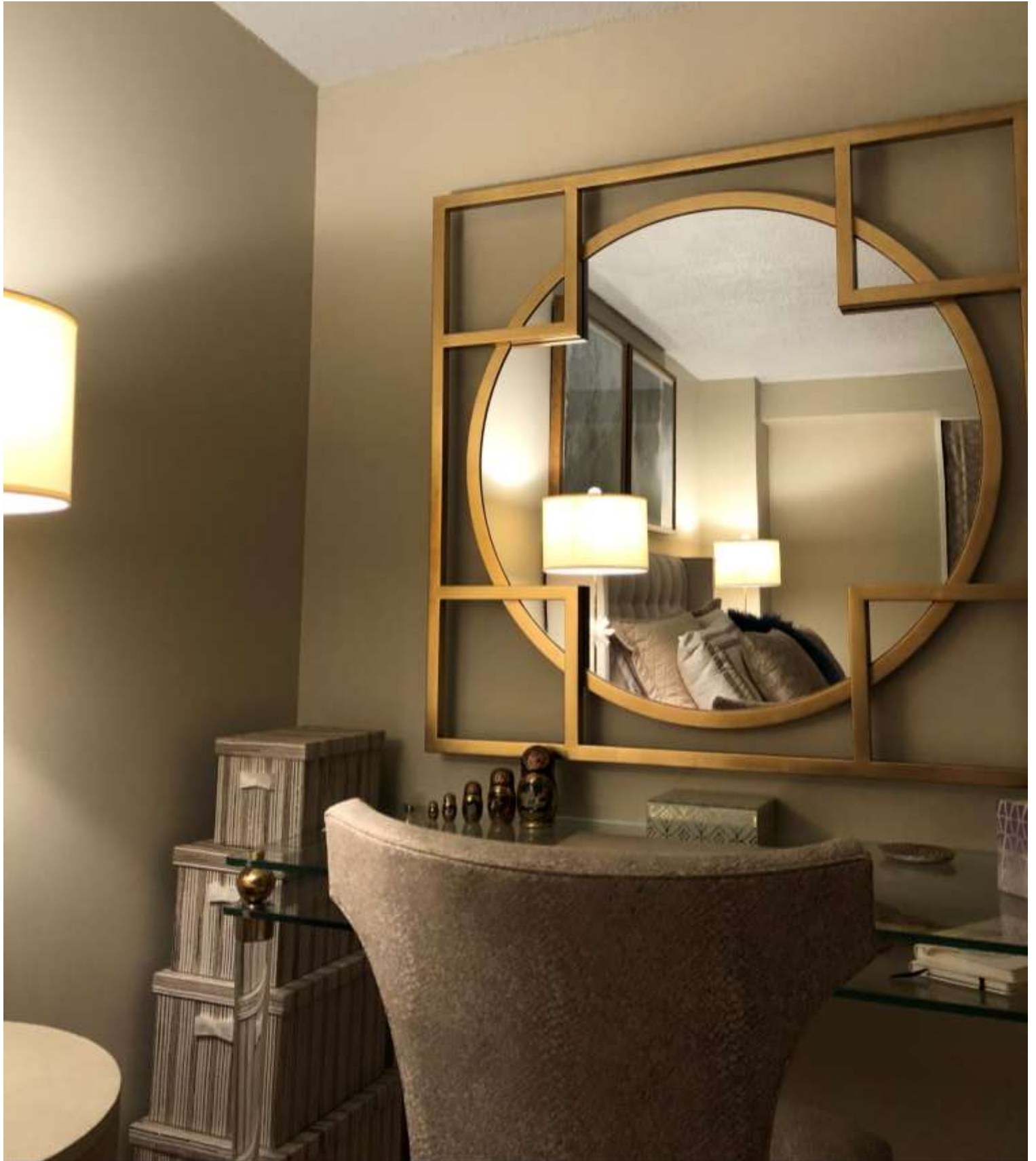






Stunning modern artwork and oversized John Richard mirrors give the spaces a modern touch and expands the spaces dimension. Shagreen, quartz, gold, and crystal and beautiful curated accessories adorn the interior and give the apartment an opulent touch.





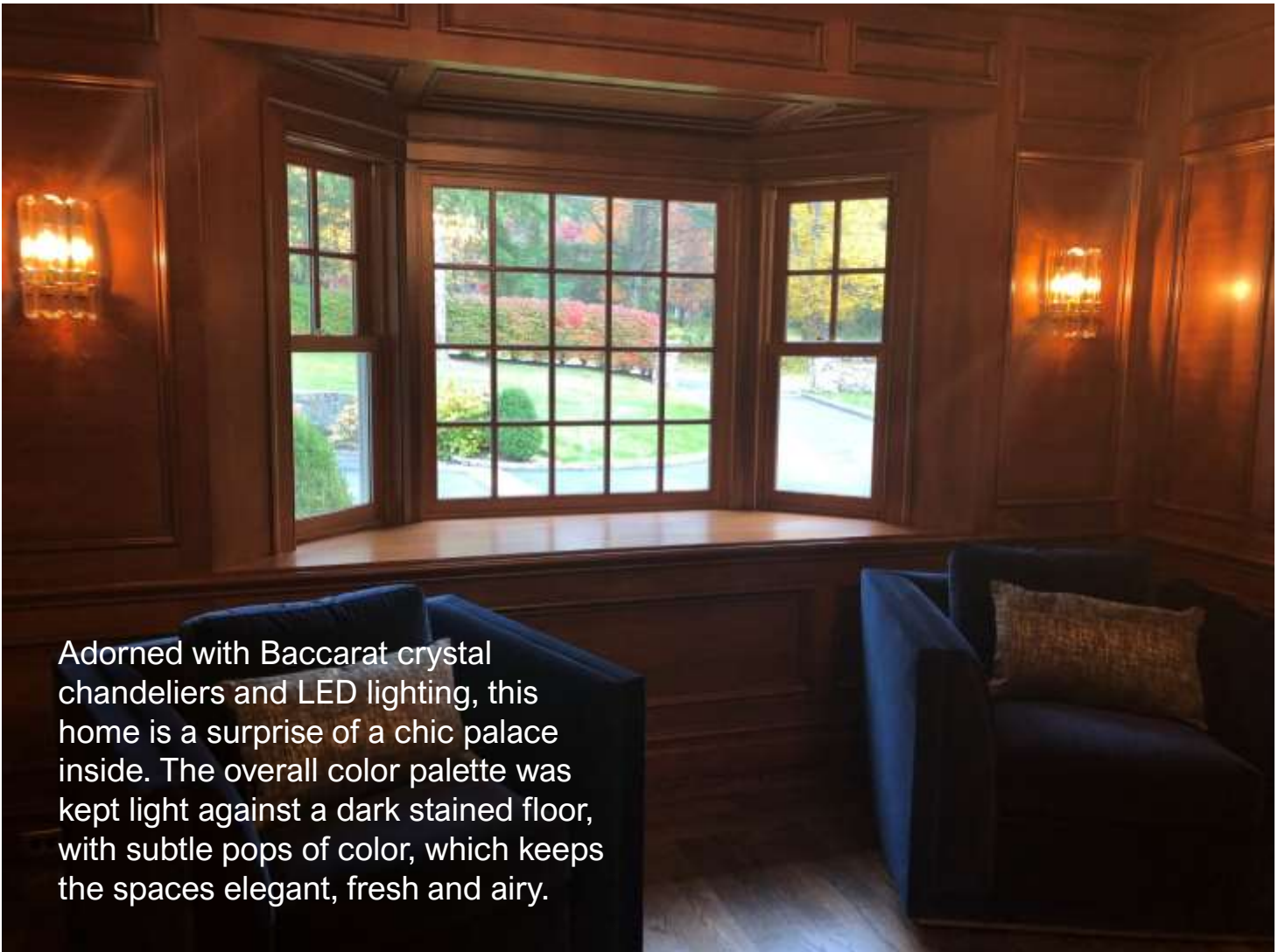
GREENWICH ESTATE

LOCATION : 42 RICHMOND HILL RD,
GREENWICH, CT.

Residing in the prestigious and affluent area of Greenwich, CT, this estate drips pure decadence. The architecture and furniture in the space makes an ode to classicism through forms, colors and finishes while still contemporary in style, creating a timeless interior.









In the library, a royal blue club chair that matches the existing woodwork adds an element of masculinity. This glamorous home renovation was a complete makeover from the original countryside estate interior.

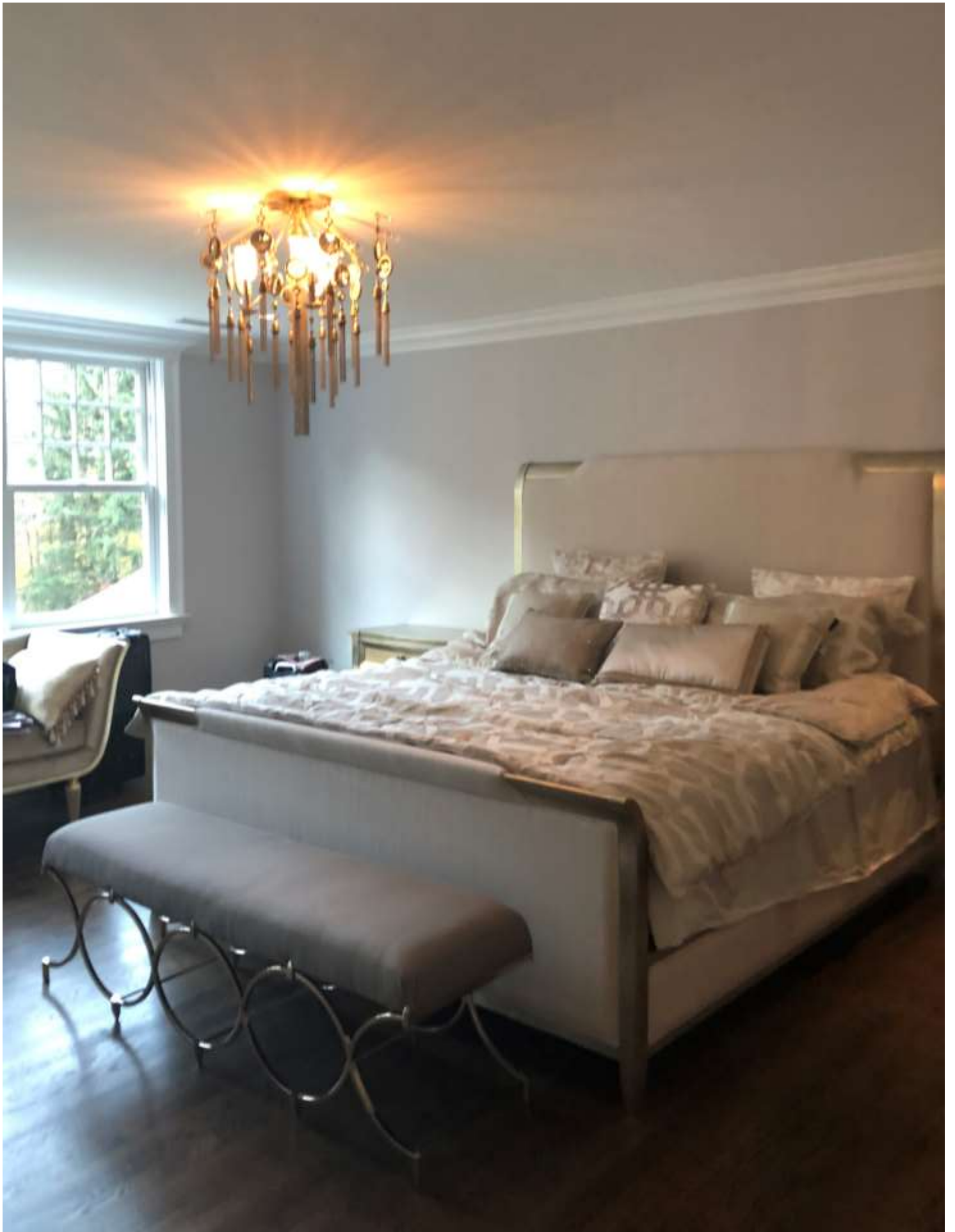








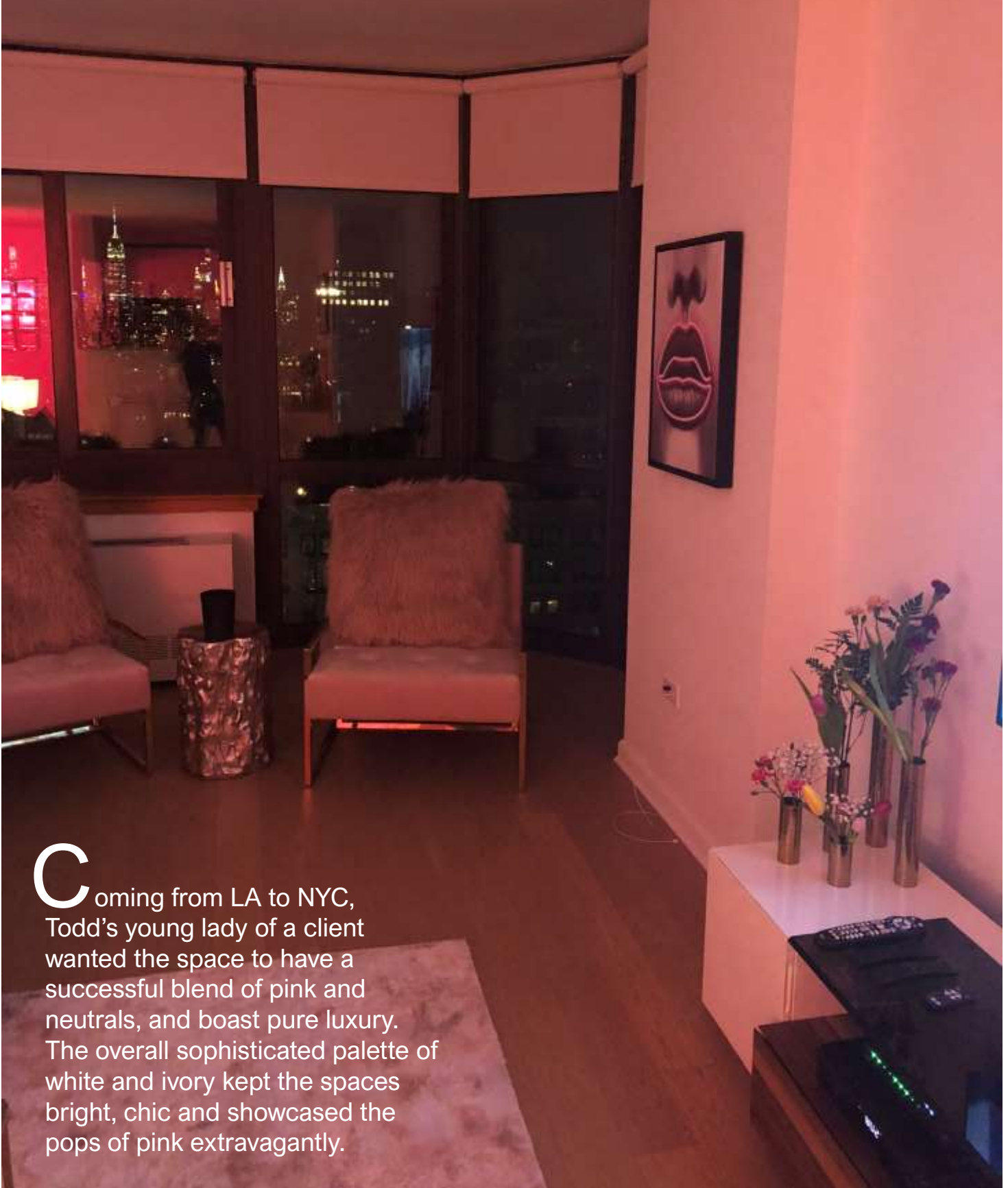




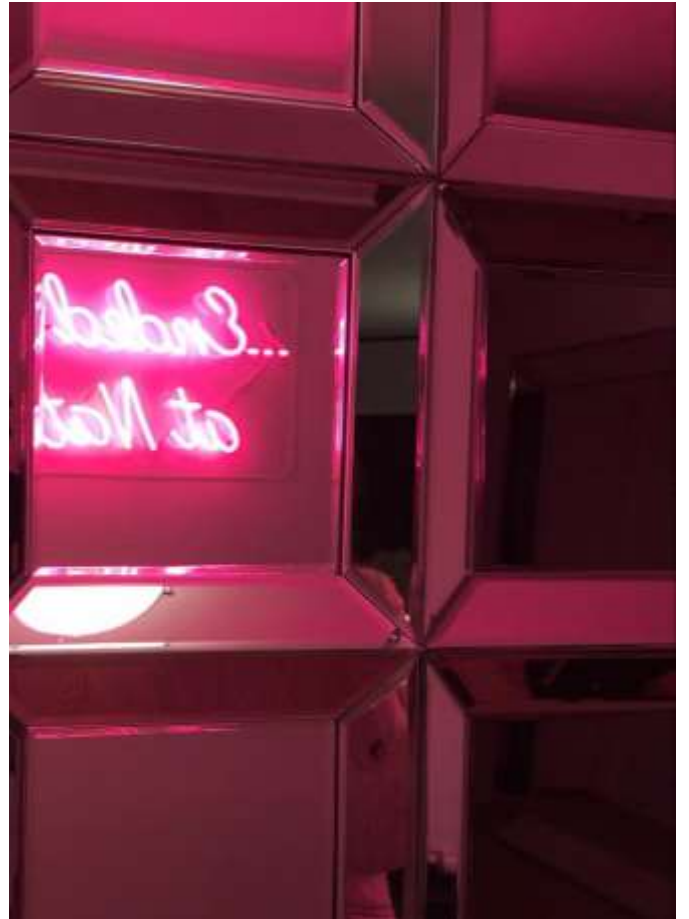


PERFECTLY PINK IN TRIBECA

LOCATION : 105 DUANE ST. NY, NY., TRIBECA TOWERS



Coming from LA to NYC, Todd's young lady of a client wanted the space to have a successful blend of pink and neutrals, and boast pure luxury. The overall sophisticated palette of white and ivory kept the spaces bright, chic and showcased the pops of pink extravagantly.



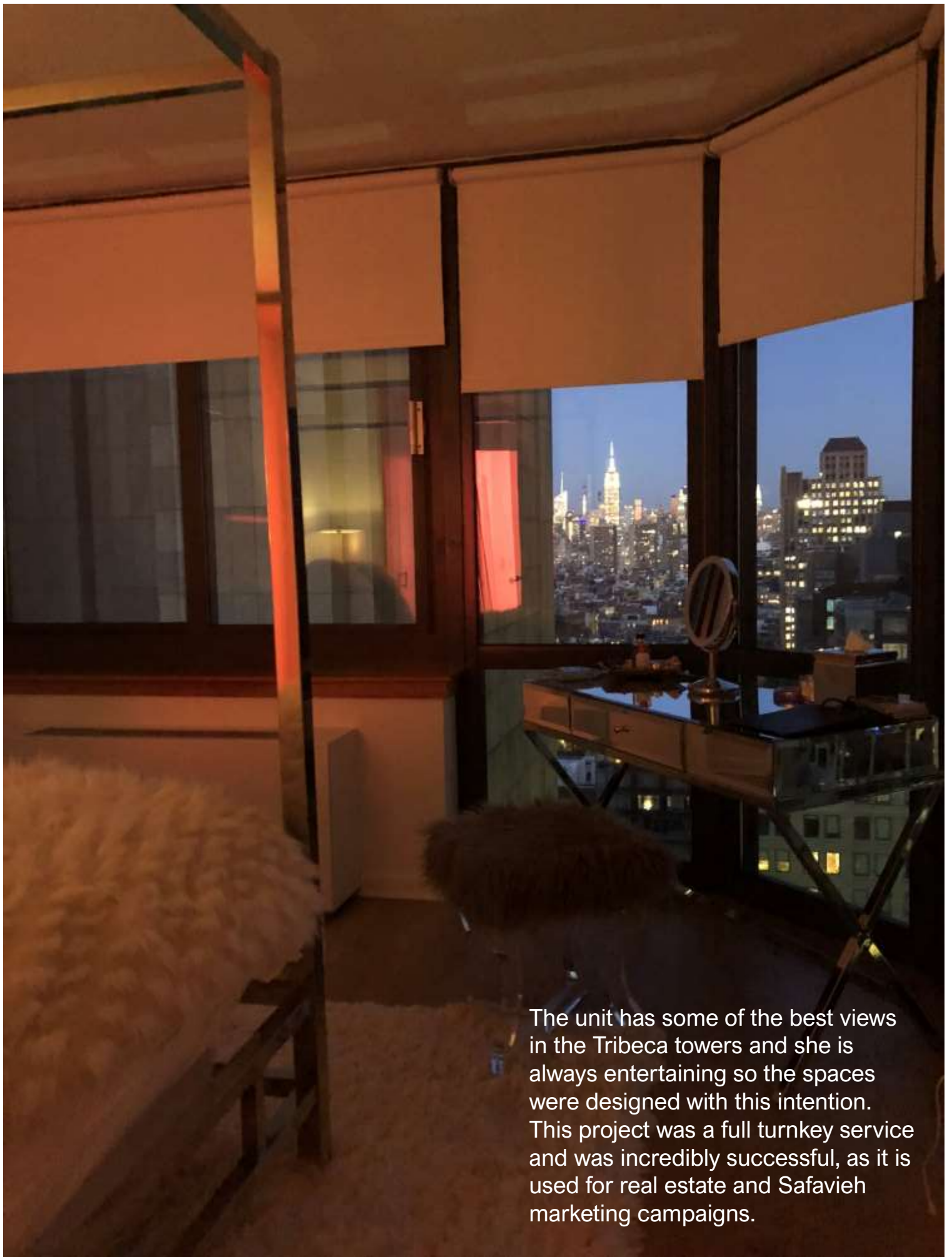




Simple furniture combined with designer accessories and artwork really made the space feel ultra rich and elegant. We did a custom neon sign to have a dramatic entryway statement, and act as a backdrop for her parties of course, inspired by a hot and hip photo op at club in LA. The mirrored surfaces and touches of gold have a glamorous effect while the pops of millennial pink and modern artwork keeps the space fun. Fur, crushed velvet, glass and metallic finishes elevate the space and defines modern luxury.



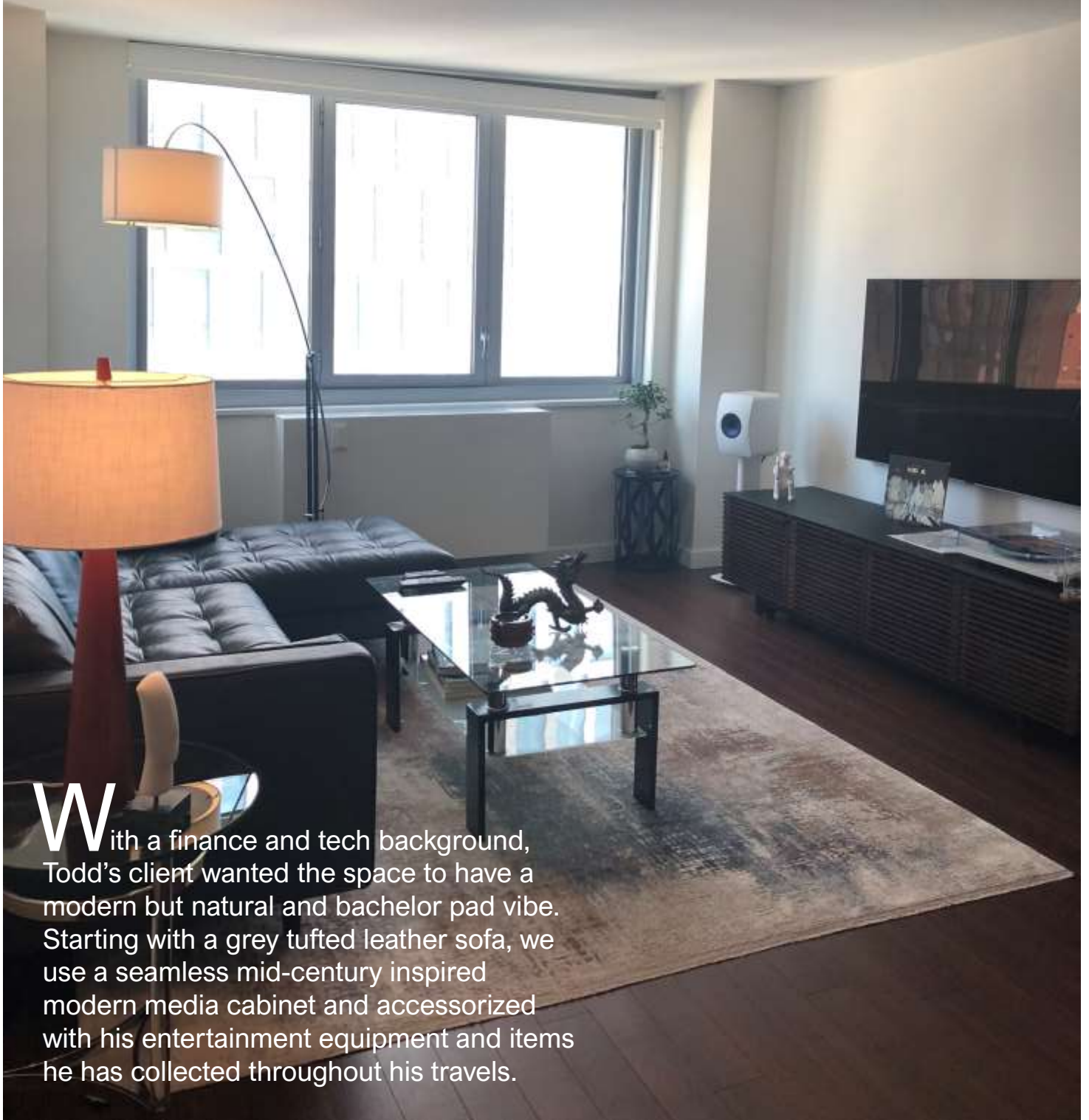




The unit has some of the best views in the Tribeca towers and she is always entertaining so the spaces were designed with this intention. This project was a full turnkey service and was incredibly successful, as it is used for real estate and Safavieh marketing campaigns.

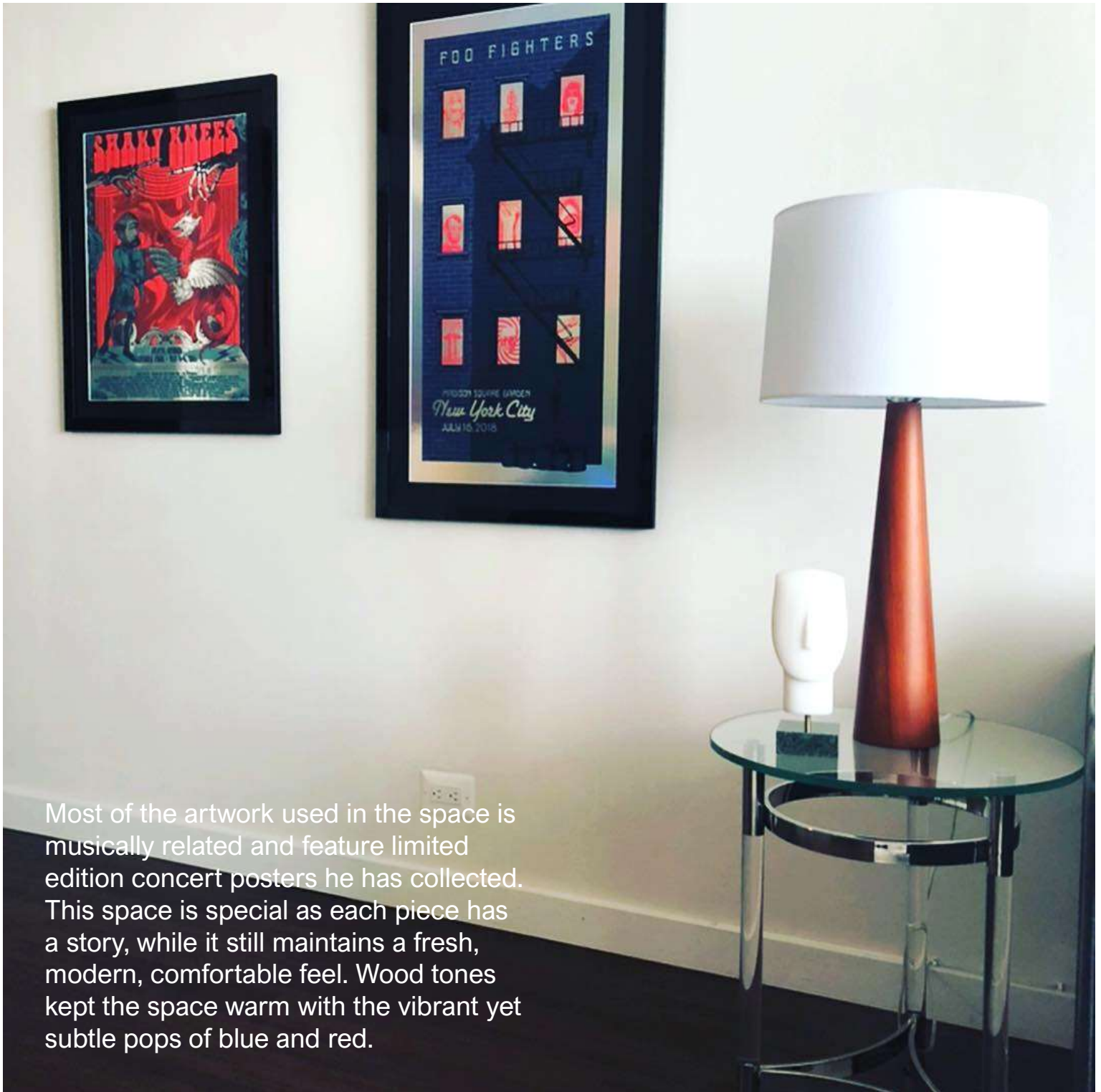
MIDTOWN MIDCENTURY

LOCATION : 401 E 34TH ST. NY, NY.



With a finance and tech background, Todd's client wanted the space to have a modern but natural and bachelor pad vibe. Starting with a grey tufted leather sofa, we use a seamless mid-century inspired modern media cabinet and accessorized with his entertainment equipment and items he has collected throughout his travels.



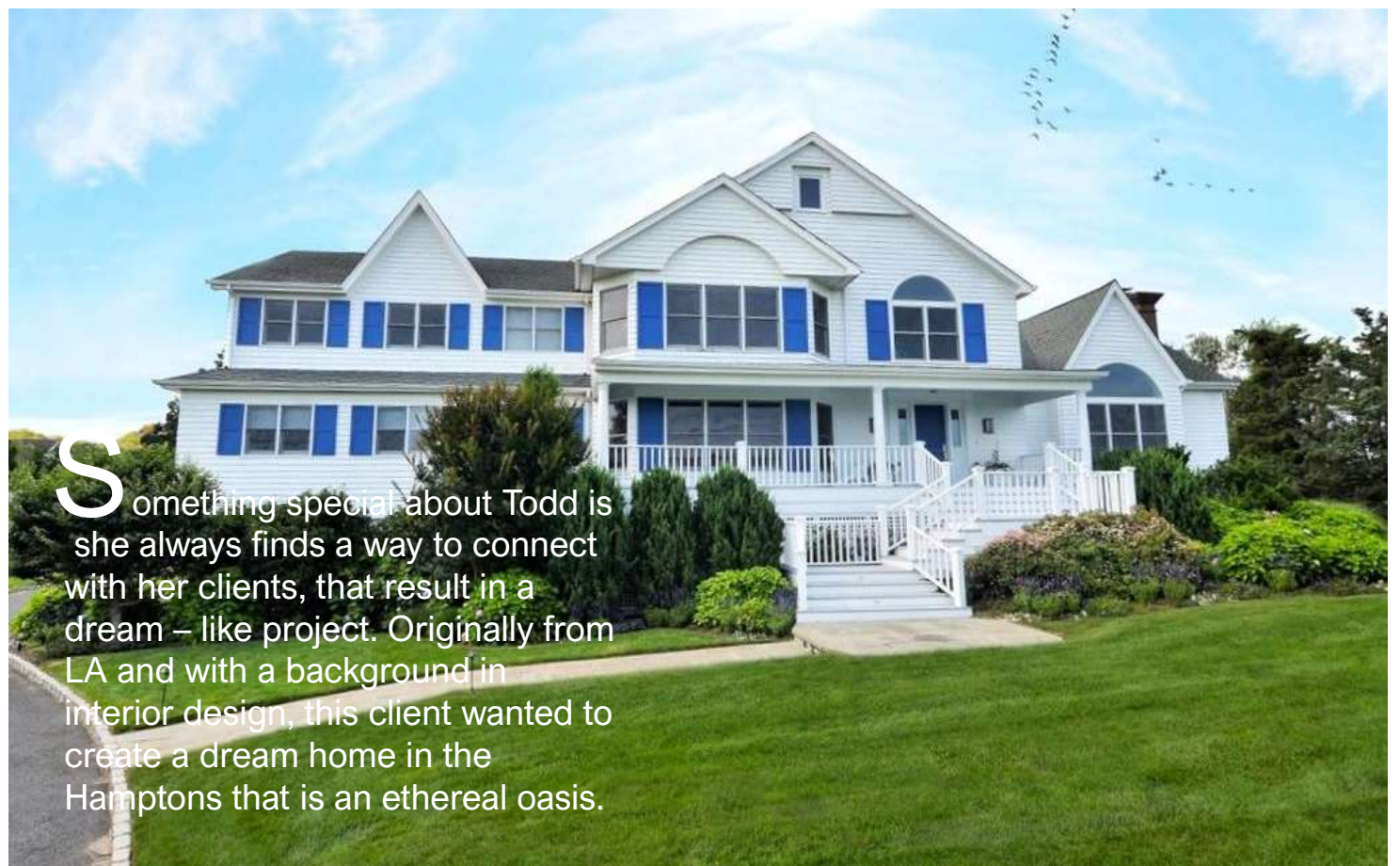


Most of the artwork used in the space is musically related and feature limited edition concert posters he has collected. This space is special as each piece has a story, while it still maintains a fresh, modern, comfortable feel. Wood tones kept the space warm with the vibrant yet subtle pops of blue and red.

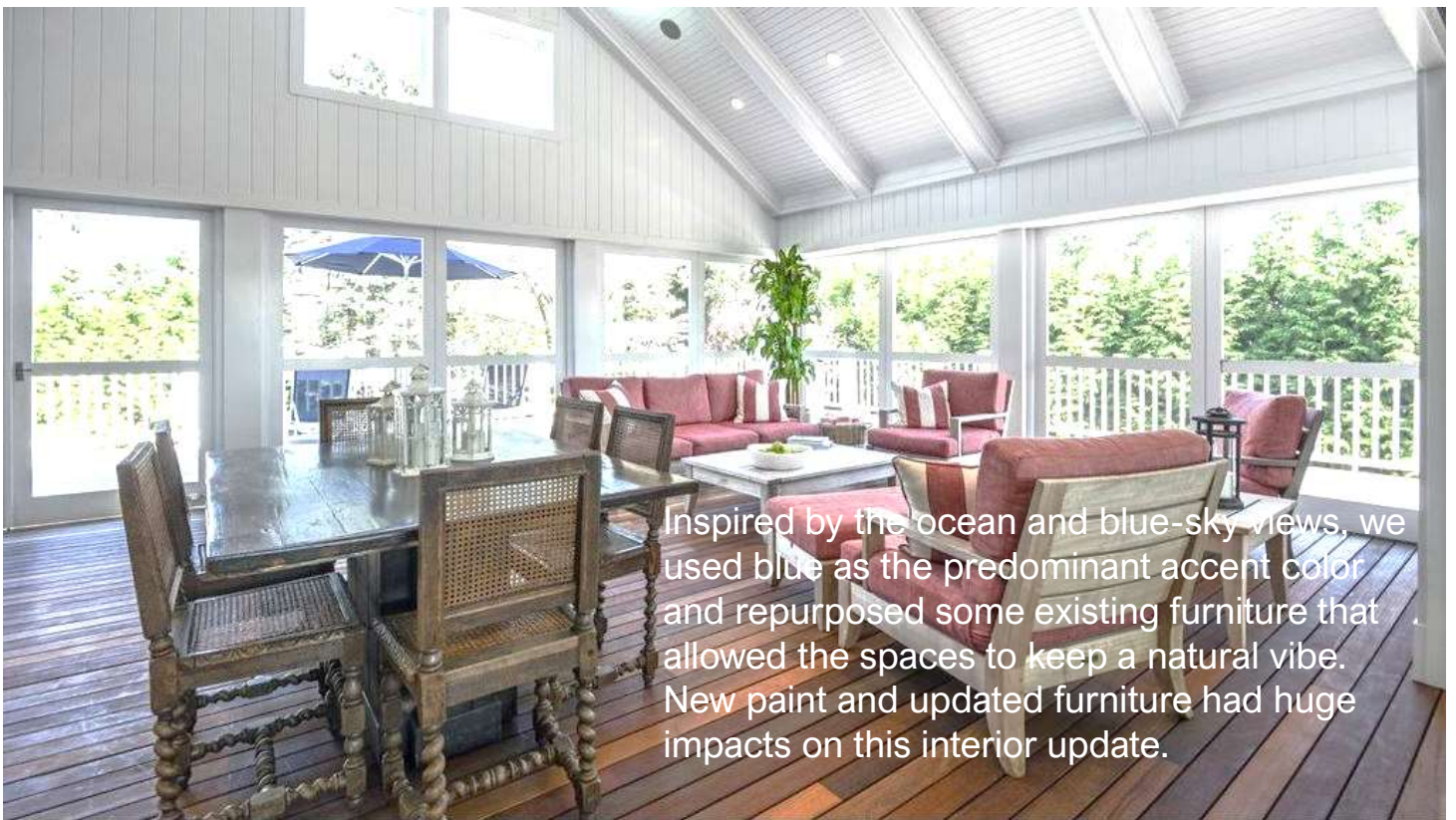


WEST HAMPTON ESTATE

LOCATION : 42 EXCHANGE PLACE WESTHAMPTON, NY.



Something special about Todd is she always finds a way to connect with her clients, that result in a dream – like project. Originally from LA and with a background in interior design, this client wanted to create a dream home in the Hamptons that is an ethereal oasis.



Inspired by the ocean and blue-sky views, we used blue as the predominant accent color and repurposed some existing furniture that allowed the spaces to keep a natural vibe. New paint and updated furniture had huge impacts on this interior update.



SAFAVIEH SOHO SHOWROOM

LOCATION : 150 THOMPSON ST. NY, NY. 10012



Todd started as a design assistant at world renowned luxury interior brand, Safavieh's flagship store on Broadway. Shortly after becoming an interior designer, she designed the Broadway and Soho showroom interior architecture. She has gained a celebrity clientele here and currently is a lead designer at the Soho location.









Located in the heart of Soho, the aesthetic of the showroom was kept modern, clean and fresh to appeal to the area. We kept the beautiful traditional columns and built a modern environment around it. Showcasing some of the best brands the design world offers,



Todd is affluent in custom furniture and has great relationships with vendors like Bernhardt, Century Furniture, Glas Italia, Made Goods, Arteriors, Trica, and many more. Known for their quality rugs, she has an extensive knowledge about rug styles, patterns, materials, and history.

